

VERTICAL IMMERSION PUMPS

Series D20 - PP

20 - 54 m³/h

333 - 900 l/min

Vertical single stage centrifugal immersion pump, sealless and dry-run safe for non-pressurized tank application.

The D20 series combines optimized hydraulic efficiency with a robust, compact and reliable construction, resulting in maximum installation uptime and a long service life, running 24/7.

Features

- Machined from Simona® AlphaPlus™ high performance PP
- Very easy, leak free, in-tank installation
- Easy connection above cover
- Including complete +GF+ union end
- Free turning shaft, no seal or bearing, can run dry
- Impeller locked (no damage with wrong rotation direction)
- Self priming when flooded
- EPDM elastomers
- Max. temperature 80°C
- High quality European, purpose designed electric motor:
 - 3 phase, 50 Hz, 2900 rpm, IP55, multi voltage
 - with double layer 2C chemical resistant coating
 - full length SS shaft with PP protection pipe
 - suitable for frequency drive control
 - built-in PTC-thermistor
 - stainless steel fasteners
 - CE certified and UL listed



D20-50/28-400-PP

Options

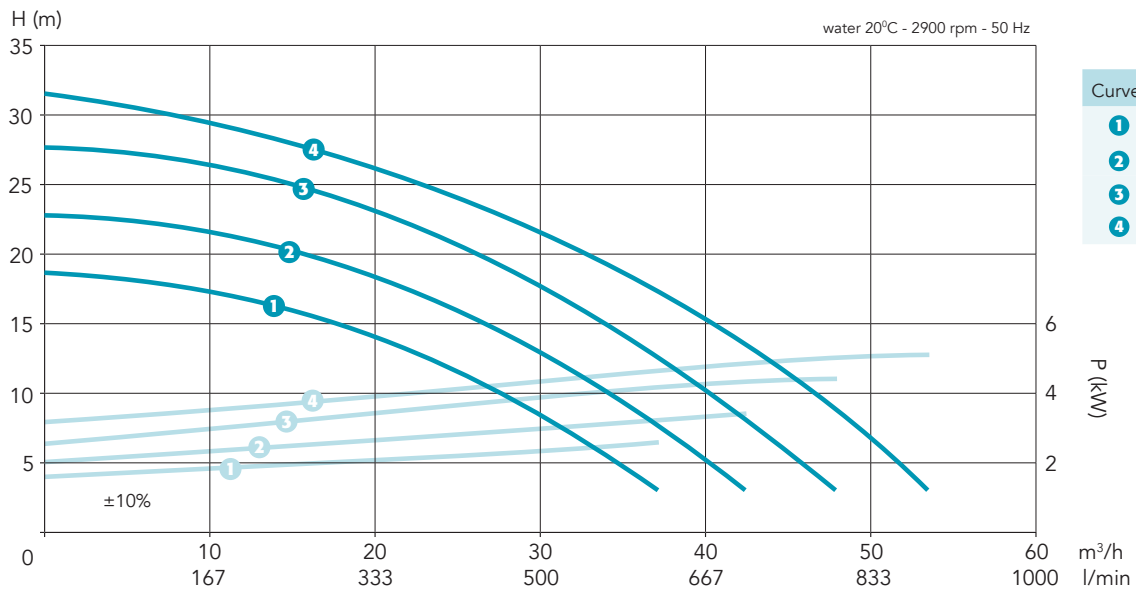
- Customised mounting plate
- Mounting plate sealing
- Out of tank model
- Suction extension pipe
- Suction strainer
- Flange connection
- Union socket in PVC or CPVC
- Specific elastomers
- Vapour lock
- Fixation securing the pump
- Electric motor options:
 - EMC compatibility
 - motor mounted frequency drive
 - Ti shaft and fasteners
 - other RAL colours

Type	Material	Q max (m ³ /h)	H max (m)	Out (d/DN)	Immersion length (mm)
D20-40/20	PP	40	18	50/40	400
D20-45/25		45	23		
D20-50/28		50	28		
D20-50/31		54	31		

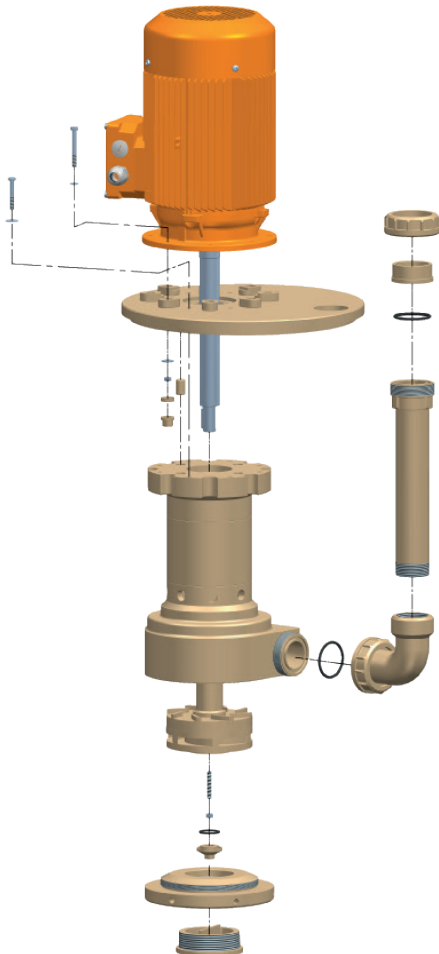
Selection example: D20-50/28-400-PP

Motor kW	HP	I nom. (A) 400V-50Hz	Net weight (kg)
4	5½	7,4	47
5,5	7½	10,2	59
7,5	10	13,7	61

all motors fit, selection based on duty point and application



Exploded view



Dimensions

Motor (kW)	"B"
4	384
5,5	460
7,5	460

